

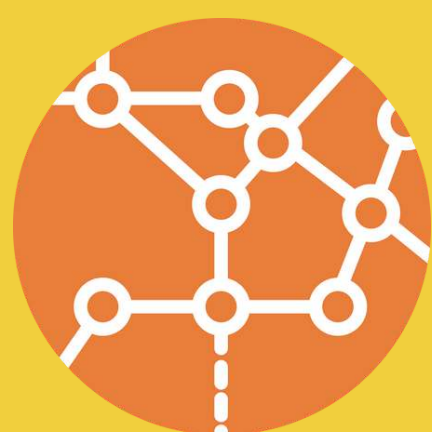
RNC2 URBAN THEME ANNUAL RESEARCH WĀNANGA 2022



Come to the gorgeous marae and join our core members with their latest research on Smart resilient cities, Inclusive urban communities and Pathways to urban resilience.

7 NOVEMBER
9AM - 5PM

• Te Rau Karamu Marae,
• Pukeahu Campus,
• Te Whanganui-a-Tara
• (Massey University, Wellington)



URBAN

[RSVP here](#)

Click to see the [draft programme](#)

Contact Alicia Cui a.cui@massey.ac.nz for any questions