

# WHANAKE TE KURA I TAWHITI NUI

30 MEI 2023

## RANGATAHI SYMPOSIUM IMPRESSIONS

*"I might be a bit biased because I love rocks but I really enjoyed Jon's presentation. Jon did a great job of showing how mātauranga Māori can inform western science and how as Māori we can respond to climate change.*

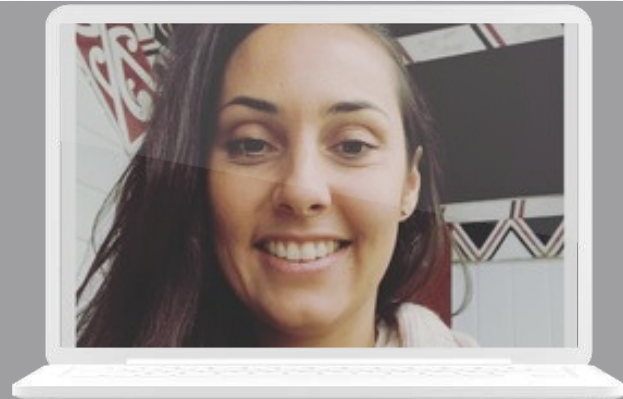
*As a kairangahau, his example of Ngāti Rangī and how they culturally monitor their maunga was a highlight for me. I haven't applied this just yet but our hapū is heading into the wai māori space soon and I hope to bring these learnings into that project! I personally really enjoy listening to practitioners in these spaces and sometimes I think we miss the balance between our people who have hands-on experience and academics.*

*There are a lot of pūkenga taiao in Whakatāne who have been involved in projects or are currently researching and that would have also been really choice to hear from them."*

**-Lanae Cable**



Lanae Cable from Kauae Raro really enjoyed Professor Jon Proctor's presentation at the Mātauranga Māori Science Research Symposium held May 10-11 in Whakatāne.



Lara Taylor. Project lead

## TIRITI CENTRIC ALTERNATIVES TO RMA

Lara Taylor (E Oho! Awakening Aotearoa), presented to the Symposium via Zoom due to the impact of another storm on her kāinga in Muriwai. A rohe and landscape that has been scarred by the accepted however substandard planning and decision making regarding resource management and infrastructure under the colonial and colonising construct of the Resource Management Act (RMA).

Lara advocates for an authentic Tiriti centric framework of resource management that recognises and respects our environmental taonga in meaningful ways. Integral to an authentic system is policy and practice that upholds, empowers, and enables rangatiratanga (Māori leadership), mātauranga, and tikanga at multiple scales (iwi, hapū, whānau, national, regional, rohe, local, catchment etc.) respective of governance and management context.

🔍 Learn about and hear the haka "E kore whakaae ture kawanatanga" composed by Dr Wiki Walker-Hockey for this project [here](#)

Lara's project **Assessing the implications of Resource Management Act reforms on resilience for Māori communities** connects with Whāinga tuarua

# Whāinga

# 2

How can Māori knowledges inform planning and improve resilience at the hapū, iwi and multiple-iwi levels?





## Nau mai Hautapu

Introducing Hautapu Baker our new Mātauranga Māori Knowledge Broker for the Resilience to Nature's Challenges (RNC) programme.

Ko Hikurangi raua ko Titirangi ngā maunga  
Ko Waiapu rauako ko Uawa ngā awa  
Ko Horouta raua ko Tereanini nga waka  
Ko Ngati Porou, ko Te Aitanga a Hauiti ngā iwi  
No nga hapu me ngā marae maha o ngā iwi e rua ahau, Ko Hautapu Baker tōku ingoa.

Noku te whiwhi hei tu hei Vision Mātauranga Māori Knowledge Broker for RNC. This is a national role with a focus on innovating mātauranga beyond the 'Vision Mātauranga' continuum, and supporting initiatives, outputs and outcomes with a focus on iwi, hapū, whānau, Māori organisations and communities.



**We must all continue to be brave, take up space and take care of one another and our mātauranga.**

- Key message delivered at the Symposium



## Co-Leads VOICE and REFLECTIONS

Tērā a Matariki, a Puanga ka rewa i te pae, nau mai rā e ngā hua o te tau hou!

Te Whanake Te Kura i Tawhiti Nui are proud to celebrate recent achievements of our research whānau. Stemming from collective aspirations shared during our programme's 2022 annual wānanga, this is the first of a series of pānui to celebrate, share and disseminate highlights and opportunities from our research whānau as we approach the last 12 months of RNC and plan for our contribution to Te Ara Paerangi.

Highlights of this pānui include our recent symposium in Whakatāne hosted by Te Whare Wānanga o Awanuiārangi, welcoming Hautapu Baker onboard as our Vision Mātauranga knowledge broker, welcoming the talented Te Huamānuka Crown to our whānau to help with upcoming aspirations, PhD research, appearances in the media, and recent publications.

Surfacing from reporting, annual planning, engaging Ariki Creative video opportunity, organising our symposium and annual wānanga and supporting a number of contract changes, as Puanga and Matariki start to rise we now have our eyes set on upcoming opportunities.

As co-leads, we are now supporting the planning and design for the upcoming RNC Forum and Kaupapa Māori research day, working with key supporters to assemble abstracts and proposal for our pukapuka, looking to opportunities for other digital forms of research dissemination such as podcasts and iwi radio, supporting PhD's and research leads with funding for iwi/hapū partners and writing retreat, and one of your co-leads starts as the chair of Rauika Māngai this month (Dee Sciascia). Nau mai ko te wānanga, tau ana i te ara whanaunga!

Nā mātou,

Co-leads Dr Acushla Dee Sciascia & Kristie-Lee Thomas  
Coordinator Derrylea Hardy

## PhD Reflections: The Journey so far

Dwayne Pahi O'Carroll's PhD thesis investigates the transformative development of whakairo o Taranaki (Taranaki-style wood carving) into a modern-day context relative to the role of whakapapa (tribal lineage) and Taranaki mountain-scape and land narratives.



Dwayne Pahi O'Carroll- PhD Student

## TOP 3 REFLECTIONS

1

Realising how my kaupapa fits into resilience. Recognising the intrinsic connectedness of our geography, namely Koro Taranaki and our art forms.

2

It can be isolating being a PhD student. I really appreciate being around other academics.

3

Being exposed to the Kairanagahau. Listening to and learning from these experts. Watching Jon Proctor dating the whenua through sighting the layers blew me away.

## MARK YOUR CALENDARS

- RNC Conference 27 - 29 June register here
- Hekia Parata presents her Report: 'Outrage to Optimism' 12 July presentation at Te Whare Wānanga o Awanuiārangi
- Writing Retreat 28 August for WTK research Leads & PhDs
- End of Program celebration - To Be Determined



Find out more about the rangahau being carried out within the challenge at [Whanake Te Kura i Tawhitinui](#)